



CATERING PRICE ESTIMATES

FOOD & BEVERAGE AND VENUE MINIMUMS



Please use the following guidelines to assist in budgeting for your upcoming event. These prices are for budgetary purposes only. The final cost of your function will depend upon the actual menu items and the number of attendees.

Breakfast

Hot Breakfast Buffet from \$57 per person
Brunch Buffet \$70-90 per person

Lunch

Plated Entrées \$47-71 per person
Lunch Buffet \$49-65 per person

Reception

Hors d'oeuvres (6-8 pieces pp) \$42-56 per person
Chef's Stations* \$30-79 per person, per station

Dinner

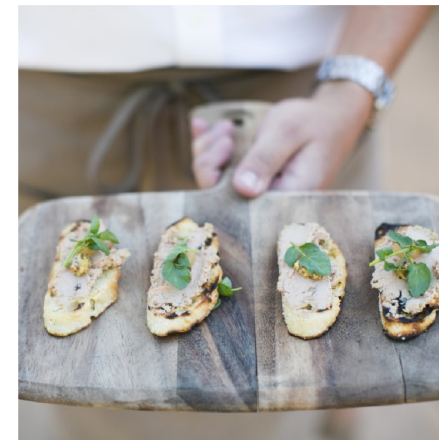
3-Course Plated Meal \$115 - \$135 per person
4-Course Plated Meal \$135 - \$155 per person
5-Course Plated Meal \$150 - \$170 per person
Dinner Buffet \$115-155 per person
Chef's Stations* \$30-79 per person
Dessert Station \$25 per person

Beverages

Signature Cocktails \$17 per drink
Premium Cocktails \$15 per drink
Hand Crafted Cocktails \$18 per drink
Wines starting at \$52 per bottle

Wedding Average Check: \$175.00 per person—daytime
\$275.00 per person—evening

**The Little Nell suggests a minimum of 3-4 stations for a heavy reception event. All food and beverages are subject to a taxable service charge of 22% and applicable sales tax of 9.3% for The Little Nell and Aspen events or 6.9% for all mountain top events.*



Each venue has a required event spend associated with it. This price excludes tax, gratuity, site fees and transportation costs. A Mountain Top Buyout is the exclusive and private use of all event spaces at the top of Aspen Mountain and allows for a fully customizable event time-

Wedding Deck Site Fee
Ceremony and Reception \$4,000
Friday | Saturday | Sunday

Ceremony Only \$5,000
Monday-Thursday with \$2,500 Food & Beverage Minimum

Reservations for ceremony only accepted no sooner than 3 months prior to event

Aspen Mountain Club	Daytime	Evening	Site Fee
Midweek	\$8,000	\$20,000	\$4,000
Friday + Sunday Evenings	\$12,000	\$30,000	\$4,000
Saturday	\$18,000	Mtn Buyout	

Sundeck	Daytime	Evening	Site Fee
Midweek	NA	\$40,000	\$7,000
Friday Sunday	NA	\$50,000	\$7,000
Saturday	NA	Mtn Buyout	

Mountain Top Buyout	Daytime	Evening	Site Fee
Midweek	NA	\$55,000	\$7,000
Friday Sunday	NA	\$65,000	\$10,000
Saturday	NA	\$75,000	\$10,000

Terrace Room	Daytime	Evening	Site Fee
Midweek	\$6,000	\$8,000	\$1,750

Gallery	Daytime	Evening	Site Fee
Midweek	\$2,000	\$4,000	\$1,500

Grand Salon	Daytime	Evening	Site Fee
Midweek	\$4,000	\$6,000	\$1,500

Gondola Plaza
Food & Beverage minimums will fluctuate based on date.

Ajax Tavern
**Available for full and partial buyout

element 47
**Available only for full buyout

***Ajax Tavern and Element 47 restaurant buyouts are subject to availability and approval for any given date. Food and Beverage minimums will fluctuate based on date.*

